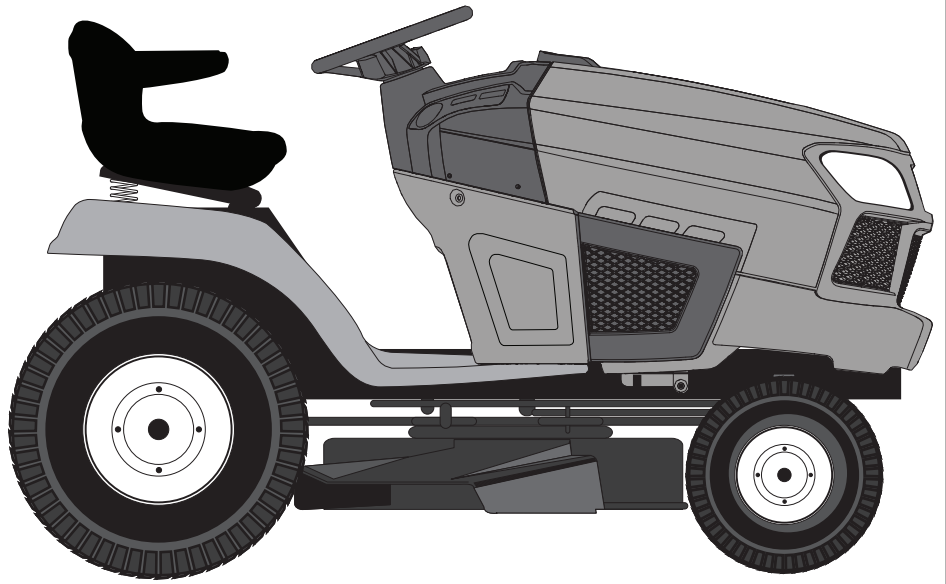


**SEARS**  
REPAIR  
PARTS  
MANUAL

**MODEL NO.  
944.101340**

**IMPORTANT:  
Read and follow  
all Safety Rules  
and Instructions  
Before Operating  
This Equipment**



**CRAFTSMAN®**

**23.0 HP\*  
ELECTRIC START  
46" MOWER  
AUTOMATIC TRANSMISSION  
LAWN TRACTOR**

\* The power rating as declared by the engine manufacturer is the average gross power output at the specified RPM of a typical production engine for the engine model measured using SAE Standards for engine gross power. Please refer to the engine manufacturer for details.

**Sears Canada, Inc., Toronto, Ontario M5B 2B8**

**115818324 Rev. 3**

08.15.2016 JSE  
Printed in the U.S.A.

# HOW TO USE THIS MANUAL

This manual is designed to provide the customer with a means to identify the parts on his/her tractor when ordering repair parts. The illustrations may or may not represent the actual assemblies; therefore, it is not recommended to use this manual as a guide to assemble or disassemble the tractor. Some hardware and parts are drawn larger in order to more readily identify them.

Each tractor has its own model number.

The model number for your tractor can be found on the fender under the seat.

When ordering parts, always give the following information:

- Product - “Tractor”
- MODEL NUMBER - “944.101340”
- Part Number
- Part Description

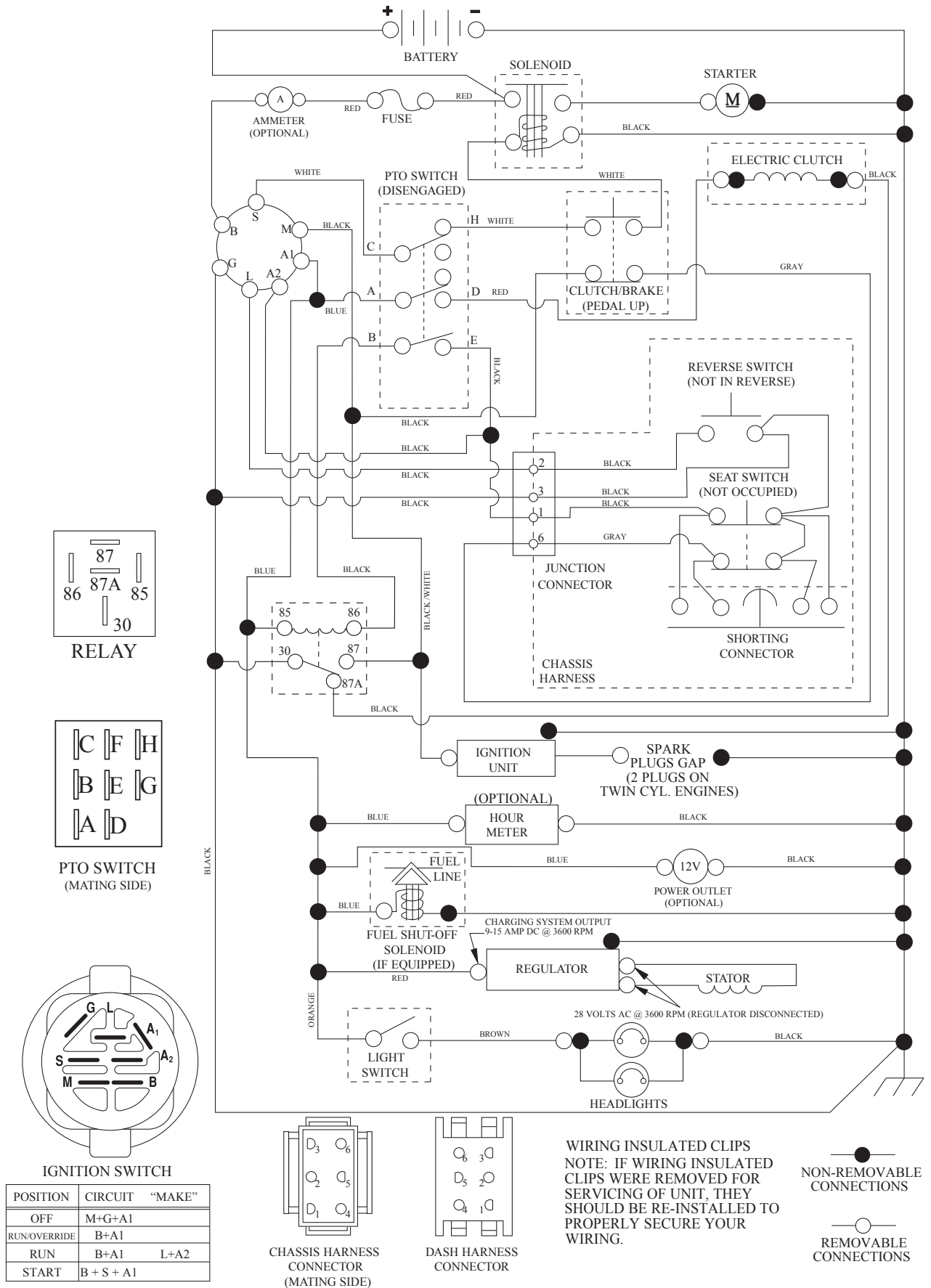
## TABLE OF CONTENTS

SCHEMATIC .....	3
ELECTRICAL.....	4-5
CHASSIS .....	6-7
DRIVE.....	8-9
ENGINE.....	10-11
STEERING .....	12-13
MOWER DECK .....	14-15
MOWER LIFT.....	16
SEAT .....	17
DECALS.....	18
TRANSAXLE BREAKDOWN .....	20-21
ENGINE BREAKDOWN.....	22-26
WARRANTY.....	27
SEARS SERVICE .....	28

# TRACTOR - - MODEL NUMBER 944.101340

## SCHEMATIC

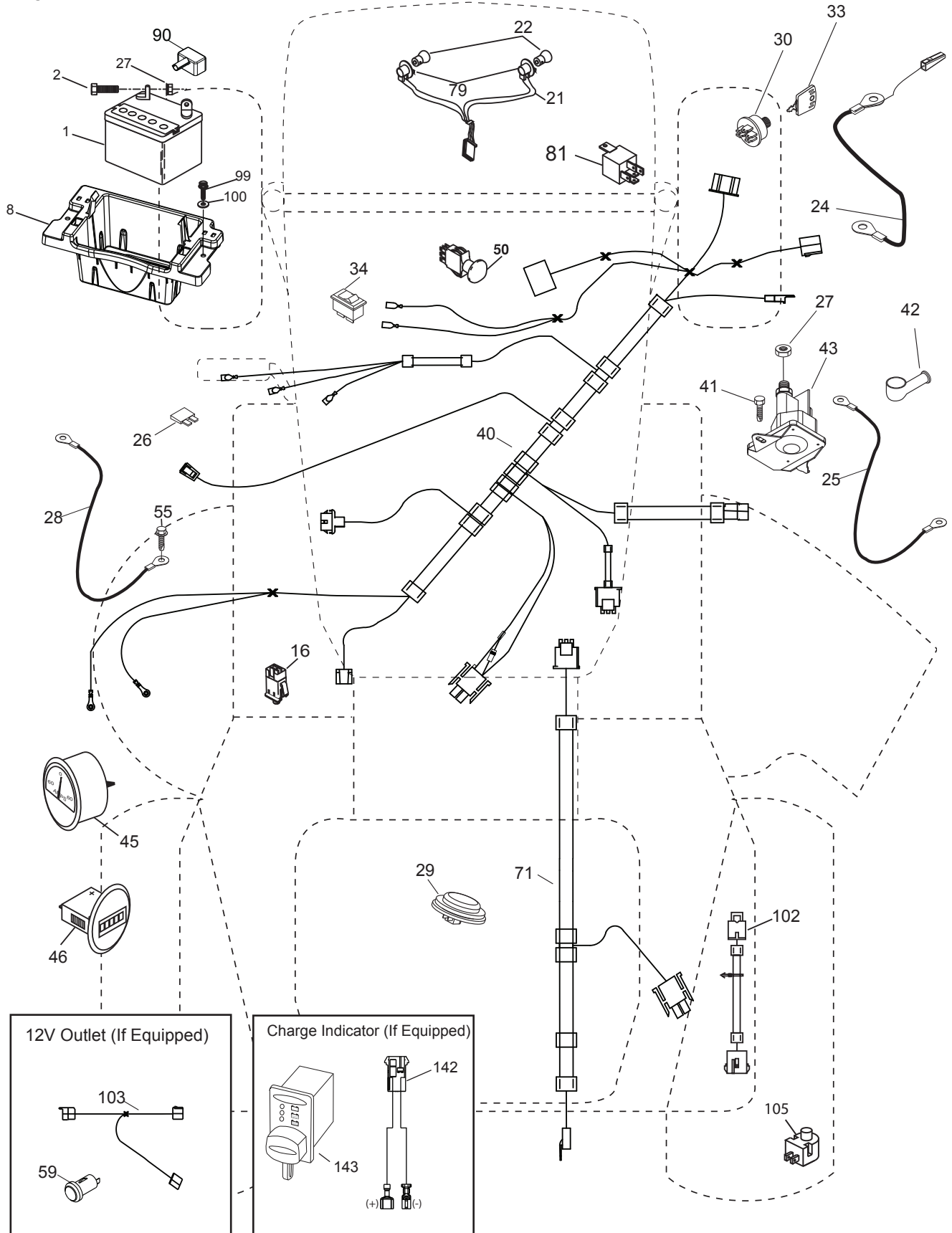
SCH13



# TRACTOR - - MODEL NUMBER 944.101340

## ELECTRICAL

T27S



## TRACTOR - - MODEL NUMBER 944.101340

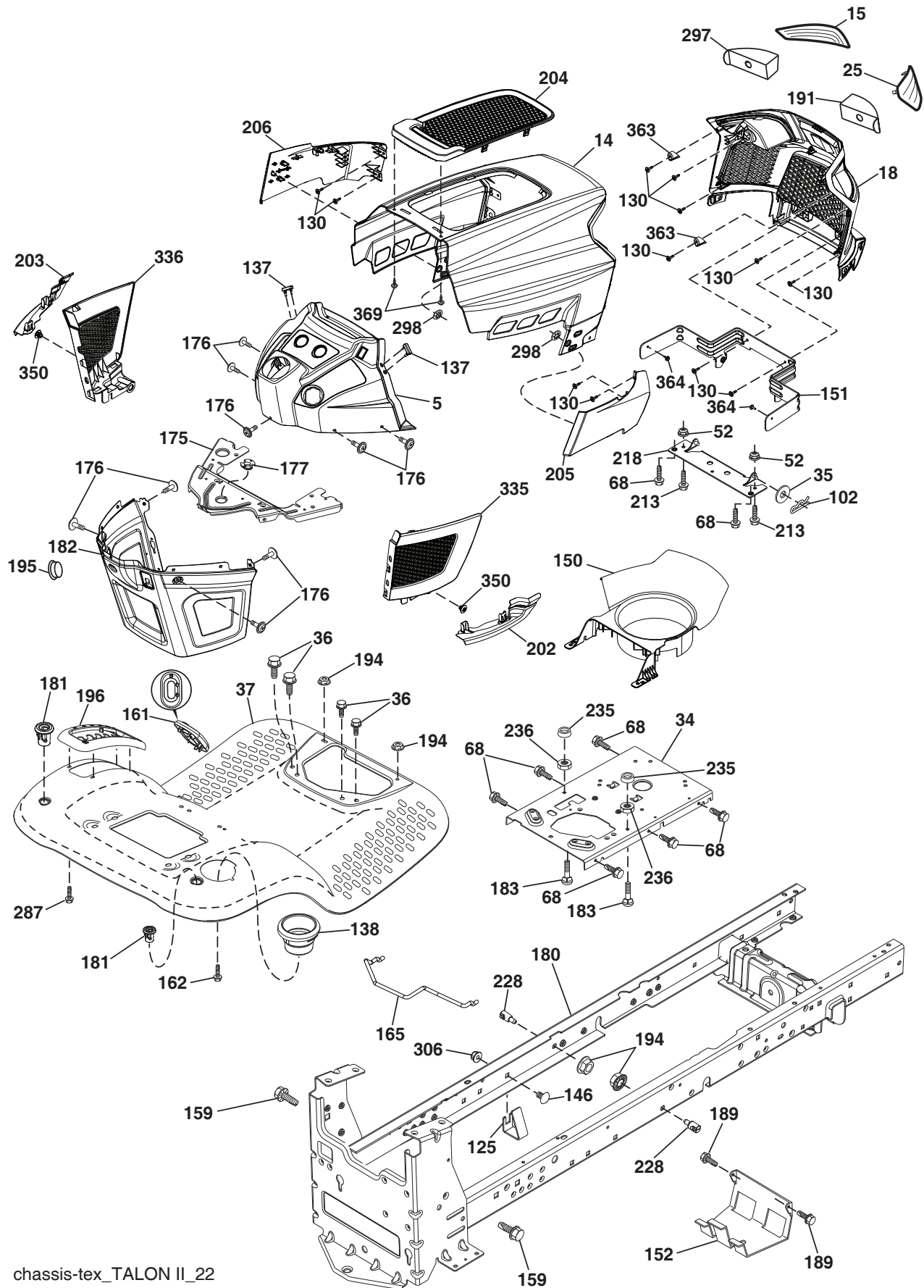
### ELECTRICAL

KEY NO.	PART NO.	DESCRIPTION
1	163465	Battery
2	74760412	Bolt Hex Hd 1/4-20 unc x 3/4
8	587205101	Box Battery
16	176138	Switch Interlock Push-In
21	400252	Harness Socket Light w/4152J
22	4152J	Bulb Light
24	585555601	Cable Btry.
25	585555501	Cable Starter
26	175158	Fuse
27	73510400	Nut Keps Hex 1/4-20 unc
28	416588	Cable, Ground
29	401545	Switch, Seat
30	193350	Switch, Ign
33	411934	Key/Chain
34	110712X	Switch Light / Reset
40	501133301	Harness Ign. Elec. Relay
41	17720408	Screw Thd Cut 1/4-20 x 1/2
42	131563	Cover, Terminal
43	192507	Solenoid
45	587553902	Gauge Ammeter
46	587554002	Gauge
50	174653	Switch PTO
55	17060512	Screw Thdrol 5/16-18 x 3/4 TYTT
71	194276	Harness Ign. Chassis
79	175242	Bulbholder Asm. Incan Descent
81	409615	Relay Harness
90	435395	Cover Terminal Battery
99	17670412	Screw Hexwsh Thdrol 1/4-20 x 3/4
100	19091416	Washer 9/32 x 7/8 16 Ga.
102	404454	Harness Pigtail K46
105	407568	Switch Reverse

**NOTE:** All component dimensions given in U.S. inches  
1 inch = 25.4 mm

# TRACTOR - - MODEL NUMBER 944.101340

## CHASSIS



chassis-tex\_TALON II\_22

# TRACTOR - - MODEL NUMBER 944.101340

## CHASSIS

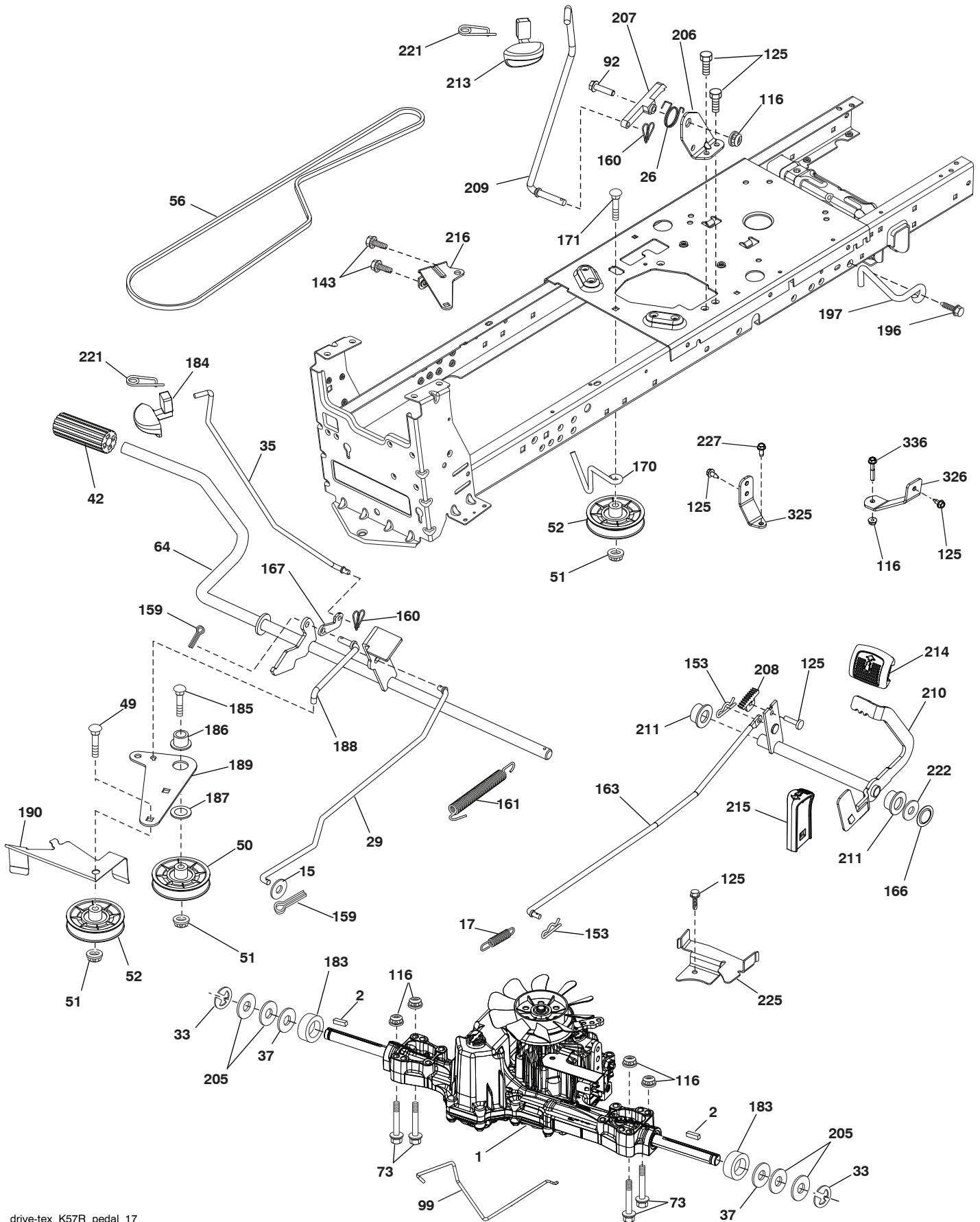
KEY NO.	PART NO.	DESCRIPTION
5	580485911	Dash
14	580354407	Hood
15	580485601	Lens LH
18	580485303	Grille
25	580484501	Lens RH
34	580910801	Plate engine
35	191111116	Washer 11/32 x 11/16 x 16 Ga.
36	17060512	Screw 5/16-18 x 3/4
37	414878X428	Fender
52	73680500	Nut Crown lock 5/16-18
68	17490508	Screw Thdrol 5/16-18 x 1/2
102	4497H	Retainer Spring 1"
125	581684801	Clip Fuel Line
130	416358	Screw #10 x .750 BOS Thread
137	407590	Bumper Dash
138	193224X428	Cupholder
146	581857901	Bolt
150	585238002	Duct Top Vent
151	580663302	Bracket Pivot
152	199535	Shield Browning/Debris
159	17000612	Screw Hexwsh Thdr 3/8-16 x 3/4
161	193229X428	Window Fuel
162	142432	Screw Hex Wsh Hi-Lo 1/4 x 1/2
165	196826	Support Tank Rear
175	196304	Crossmember
176	400776	Screw 10-24 x 5/8 Wshd Qdrx
177	195228	Bushing Steering
180	195457	Chassis
181	193102X428	Bushing Mtg. Fender Crgo.
182	406859	Dash Lower
183	74520520	Bolt 5/16-18 x 1-1/4
189	17000512	Screw 5/16-18 x 3/4

KEY NO.	PART NO.	DESCRIPTION
191	580485101	Mylar Headlight/Reflective Lens RH
194	73900500	Nut Lock Hex Flange 5/16-18
195	401556X428	Plug Hole Dash 12V Adapter
196	431659	Console Asm. Deck Lift
202	580485002	C-Closeout Lwr Trm RH
203	580484802	C-Closeout Lwr Trm LH
204	580484701	Hood Top Vent
205	580843707	Assembly Corner RH
206	580843807	Assembly Corner LH
213	74760512	Bolt hex HD 5/16-18 unc x 3/4
218	580897301	Pivot Hood Assy
228	195161	Stud Fastener
235	406129	Spacer Fender
236	73930500	Nut Center Lock 5/16-18
287	17600406	Screw Hex Washead 1/4-20 x 3/8
297	580484901	Mylar Headlight/Reflective Lens LH
298	580851001	Nut Push
306	73900600	Nut Lock
335	580484602	C-Side Closeout RH
336	580484402	C-Side Closeout LH
350	445143	Clip X-Mass Tree
363	580724501	Cap Talon Grille
364	17060408	Screw
369	421756	Screw #10 x 0.500 BOS Thread
--	447870	Bumper

**NOTE:** All component dimensions given in U.S. inches  
1 inch = 25.4 mm

# TRACTOR - - MODEL NUMBER 944.101340

## DRIVE



drive-tex\_K57R\_pedal\_17



# TRACTOR - - MODEL NUMBER 944.101340

## DRIVE

KEY NO.	PART NO.	DESCRIPTION	KEY NO.	PART NO.	DESCRIPTION
1	— — — —	Transaxle, TUFFTORQ K57R (437814) (See transaxle break-down.)	185	72110622	Bolt Rdhd Sqnk 3/8-16 x 2-1/2
2	123583X	Key	186	194321	Spacer Retainer
15	19131316	Washer 13/32 x 13/16 x 16 Ga.	187	19133210	Washer
17	413678	Spring, Brake	188	582217001	Link Clutch Ground Drive, Long
26	199679	Spring Return Cruise	189	194317	Bellcrank Ground Drive
27	17490528	Screw Hex Wsh. Thd 5/16-18 x 1-3/4	190	194318	Keeper Bellcrank Ground Drive
29	403806	Rod, Brake	196	17000616	Screw 3/8-16 x 1
33	12000001	Ring E	197	585658601	Link Clutch Anti-Rotation 1" CRK
35	583864501	Rod, Brake, Park	205	121748X	Washer
37	188967	Washer	206	448596	Bracket Mount Latch Cruise
42	8883R	Cover, Foot Pedal	207	587031401	Latch Control Cruise
49	72110614	Bolt	208	197869	Gear Sector Control Cruise
50	194327	Pulley Idler Flat	209	199592	Rod Control Cruise
51	73900600	Lock Nut 3/8-16	210	400980	Rocker Asm. Pedal Control
52	194326	Idler V-Groove	211	120183X	Bearing Nylon
56	130969	V-Belt, Drive	213	196441X428	Knob Control Cruise
64	197865	Shaft Asm. Pedal Brake Control	214	421263	Pedal Forward
73	74490540	Bolt 5/16-18 x 4.5 Gr. 5	215	197301X428	Pedal Reverse
92	74760520	Bolt Fin Hex 5/16-18 unc x 1.25	216	196131	Bracket Pulley Idler
99	415742	Rod Spring Bypass	221	403187	Retainer Spring Clip Handle
116	73900500	Nut Lock Hex Flange 5/16-18	222	79212010	Washer 21/32 x 1-1/4 x 10 Ga.
125	17000512	Screw 5/16-18 x 3/4	225	403319	Keeper Belt Trans.
143	17490508	Screw 5/16-18 x 1/2	227	17490512	Screw Thdrol. 5/16-18 x 3/4
153	4497H	Retainer Spring	325	585668502	Torque Strap K46 LT RH
159	76020412	Pin Cotter 1/8 x 3/4	326	585670802	Bracket TRQ STP 46 20" Tire RH
160	169484	Retainer Clip	336	587259601	Bolt 5/16 - 18 x 1-3/4 Flanged
161	105709X	Spring, Return, Clutch			
163	448275	Rod Pedal Control			
166	429164	Nut Push .625			
167	405257	Latch Brake Parking			
170	194322	Keeper Belt Centerspan			
171	72110616	Bolt 3/8-16 x 2			
183	137057	Spacer Split			
184	196439X428	Handle Parking Brake			

**NOTE:** All component dimensions given in U.S. inches  
1 inch = 25.4 mm

## ENGINE



engine-tex\_bs-2cyl\_170

# TRACTOR - - MODEL NUMBER 944.101340

## ENGINE

KEY NO.	PART NO.	DESCRIPTION
1	- - - -	Engine B&S Model No. 44S777-0013-G1 (586640401) (See engine breakdown.)
2	445962	Muffler
9	501832601	Keeper Belt Engine
11	587241601	Clutch Electric
12	405097	Pulley Engine
15	438080	Tank Fuel
18	585124802	Cap Asm. Fuel
20	586219601	Control Throttle/Chk.
21	416358	Screw #10 x 0.750 BOS Thread
28	401137	Fuel Line
29	137180	Spark Arrester Kit
37	123487X	Clamp Hose
41	126197X	Washer 1-1/2 OD x 15/32 TD x .250
42	10040700	Washer Lock 7/16
45	73510400	Nut Keps Hex 1/4-20
62	434017	Shield Heat Muffler
69	165391	Gasket Muffler
70	581881101	Pipe Exhaust LH
71	581881001	Pipe Exhaust RH
79	183906	Screw Socket Head 5/16-18 x 1
81	148456	Tube Drain
82	428287	Valve Oil Drain
84	17060620	Screw 3/8-16 x 1-1/4
85	179953	Bolt Hex 7/16-20 x 3.75 Gr
90	17000616	Screw 3/8-16 x 1.0
91	187495	Bushing 1.375 OD
102	17000512	Screw 5/16-18 x 3/4
116	423109X421	Knob Oval

**NOTE:** All component dimensions given in U.S. inches  
1 inch = 25.4 mm

## Engine Power Rating Information

The gross power rating for individual gas engine models is labeled in accordance with SAE (Society of Automotive Engineers) code J1940 (Small Engine Power & Torque Rating Procedure), and rating performance has been obtained and corrected in accordance with SAE J1995 (Revision 2002-05). Torque values are derived at 3060 RPM; horsepower values are derived at 3600 RPM. Actual gross engine power will be lower and is affected by, among other things, ambient operating conditions and engine-to-engine variability. Given both the wide array of products on which engines are placed and the variety of environmental issues applicable to operating the equipment, the gas engine will not develop the rated gross power when used in a given piece of power equipment (actual "on-site" or net power). This difference is due to a variety of factors including, but not limited to, accessories (air cleaner, exhaust, charging, cooling, carburetor, fuel pump, etc.), application limitations, ambient operating conditions (temperature, humidity, altitude), and engine-to-engine variability. Due to manufacturing and capacity limitations, Briggs & Stratton may substitute an engine of higher rated power for this Series engine.

This exploded view diagram illustrates the assembly of a steering knuckle. The main components shown include:

- Steering Knuckle (2):** The central component, shown in two orientations (top and bottom views).
- Upper Control Arm (16):** A long arm with a ball joint (27) and a bush (28).
- Lower Control Arm (61):** A shorter arm with a ball joint (69) and a bush (68).
- Steering Knuckle Plate (19):** A plate that mounts to the knuckle with bolts (57) and a nut (75).
- Steering Knuckle Bracket (5):** A bracket that mounts to the knuckle with bolts (14) and a nut (15).
- Steering Knuckle Bush (13):** A bush that fits into the knuckle.
- Steering Knuckle Pin (8):** A pin that fits into the knuckle.
- Steering Knuckle Nut (70):** A nut that fits onto the knuckle.
- Steering Knuckle Bolt (62):** A bolt that fits into the knuckle.
- Steering Knuckle Pin (67):** A pin that fits into the knuckle.
- Steering Knuckle Pin (63):** A pin that fits into the knuckle.
- Steering Knuckle Pin (60):** A pin that fits into the knuckle.
- Steering Knuckle Pin (59):** A pin that fits into the knuckle.
- Steering Knuckle Pin (58):** A pin that fits into the knuckle.
- Steering Knuckle Pin (55):** A pin that fits into the knuckle.
- Steering Knuckle Pin (54):** A pin that fits into the knuckle.
- Steering Knuckle Pin (53):** A pin that fits into the knuckle.
- Steering Knuckle Pin (52):** A pin that fits into the knuckle.
- Steering Knuckle Pin (51):** A pin that fits into the knuckle.
- Steering Knuckle Pin (50):** A pin that fits into the knuckle.
- Steering Knuckle Pin (49):** A pin that fits into the knuckle.
- Steering Knuckle Pin (48):** A pin that fits into the knuckle.
- Steering Knuckle Pin (47):** A pin that fits into the knuckle.
- Steering Knuckle Pin (46):** A pin that fits into the knuckle.
- Steering Knuckle Pin (45):** A pin that fits into the knuckle.
- Steering Knuckle Pin (44):** A pin that fits into the knuckle.
- Steering Knuckle Pin (43):** A pin that fits into the knuckle.
- Steering Knuckle Pin (42):** A pin that fits into the knuckle.
- Steering Knuckle Pin (41):** A pin that fits into the knuckle.
- Steering Knuckle Pin (40):** A pin that fits into the knuckle.
- Steering Knuckle Pin (39):** A pin that fits into the knuckle.
- Steering Knuckle Pin (38):** A pin that fits into the knuckle.
- Steering Knuckle Pin (37):** A pin that fits into the knuckle.
- Steering Knuckle Pin (36):** A pin that fits into the knuckle.
- Steering Knuckle Pin (35):** A pin that fits into the knuckle.
- Steering Knuckle Pin (34):** A pin that fits into the knuckle.
- Steering Knuckle Pin (33):** A pin that fits into the knuckle.
- Steering Knuckle Pin (32):** A pin that fits into the knuckle.
- Steering Knuckle Pin (31):** A pin that fits into the knuckle.
- Steering Knuckle Pin (30):** A pin that fits into the knuckle.
- Steering Knuckle Pin (29):** A pin that fits into the knuckle.
- Steering Knuckle Pin (28):** A pin that fits into the knuckle.
- Steering Knuckle Pin (27):** A pin that fits into the knuckle.
- Steering Knuckle Pin (26):** A pin that fits into the knuckle.
- Steering Knuckle Pin (25):** A pin that fits into the knuckle.
- Steering Knuckle Pin (24):** A pin that fits into the knuckle.
- Steering Knuckle Pin (23):** A pin that fits into the knuckle.
- Steering Knuckle Pin (22):** A pin that fits into the knuckle.
- Steering Knuckle Pin (21):** A pin that fits into the knuckle.
- Steering Knuckle Pin (20):** A pin that fits into the knuckle.
- Steering Knuckle Pin (19):** A pin that fits into the knuckle.
- Steering Knuckle Pin (18):** A pin that fits into the knuckle.
- Steering Knuckle Pin (17):** A pin that fits into the knuckle.
- Steering Knuckle Pin (16):** A pin that fits into the knuckle.
- Steering Knuckle Pin (15):** A pin that fits into the knuckle.
- Steering Knuckle Pin (14):** A pin that fits into the knuckle.
- Steering Knuckle Pin (13):** A pin that fits into the knuckle.
- Steering Knuckle Pin (12):** A pin that fits into the knuckle.
- Steering Knuckle Pin (11):** A pin that fits into the knuckle.
- Steering Knuckle Pin (10):** A pin that fits into the knuckle.
- Steering Knuckle Pin (9):** A pin that fits into the knuckle.
- Steering Knuckle Pin (8):** A pin that fits into the knuckle.
- Steering Knuckle Pin (7):** A pin that fits into the knuckle.
- Steering Knuckle Pin (6):** A pin that fits into the knuckle.
- Steering Knuckle Pin (5):** A pin that fits into the knuckle.
- Steering Knuckle Pin (4):** A pin that fits into the knuckle.
- Steering Knuckle Pin (3):** A pin that fits into the knuckle.
- Steering Knuckle Pin (2):** A pin that fits into the knuckle.
- Steering Knuckle Pin (1):** A pin that fits into the knuckle.

steering-tex\_TTR\_73

# TRACTOR - - MODEL NUMBER 944.101340

## STEERING ASSEMBLY

KEY NO.	PART NO.	DESCRIPTION
1	414851X421	Wheel, Steering
2	436870	Axle Asm., Front
4	436873	Spindle Asm., LH
5	436874	Spindle Asm., RH
6	6266H	Washer Thrust 0.75 x 1.23
7	121748X	Washer 25/32 x 1-5/8 x 16 Ga.
8	12000029	Ring, Clip #T5304-75
9	184946X667	Cap, Spindle
13	121749X	Washer 25/32 x 1-1/4 x 16 Ga.
14	10040600	Washer Lock 3/8
15	73540600	Nut, Crown Lock 3/8-24 unf
16	587016002	Shaft Steering
19	194729	Plate Steering
21	586840201	Adapter, Wheel Steering Splnd Alum
22	585029901	Bearing Subasm Shaft Steer Low
26	414852X421	Insert, Wheel Steering
27	19211616	Washer 21/32 x 1 x 16 Ga.
28	17000612	Screw 3/8-16 x 3/4
35	440770	Gear, Sector Plate
45	587016401	Washer 3/8 ID 2-3/8OD 12 Ga. PLTD
50	73900600	Nut Lock Flg. 3/8-16 unc
53	188967	Washer Hardened .793 x 1.637 x .060
57	407465	Bracket Upstop
58	194747	Bolt Shoulder Sector Pivot CFM
59	194748	Washer Thrust Sector Steering
60	73971000	Nut Flange Lock 5/8-11
61	436884	Draglink, LH
62	436885	Draglink, RH
63	17000512	Screw 5/16-18 x 3/4
64	199849	Retainer Clip Spring Steering
66	71020748	Bolt Hex Fghd 7/16-14 x 3 Serr
67	194737	Bushing PM Front Axle
68	73900700	Nut Lock Flange 7/16-14 Gr. 5
69	199162	Washer 1.5 x .505 x .118
70	585338801	Bracket Deck Susp. Front
75	580683701	Pinion
76	580683601	Screw Head Sock
80	1370H	Washer
81	436887	Link Cross RH
82	442147	Pivot Bolt
85	441873	Pivot RH
86	441872	Pivot LH
122	444962	Cap Gear Sector

**NOTE:** All component dimensions given in U.S. inches  
1 inch = 25.4 mm

## MOWER DECK



# TRACTOR - - MODEL NUMBER 944.101340

## MOWER DECK

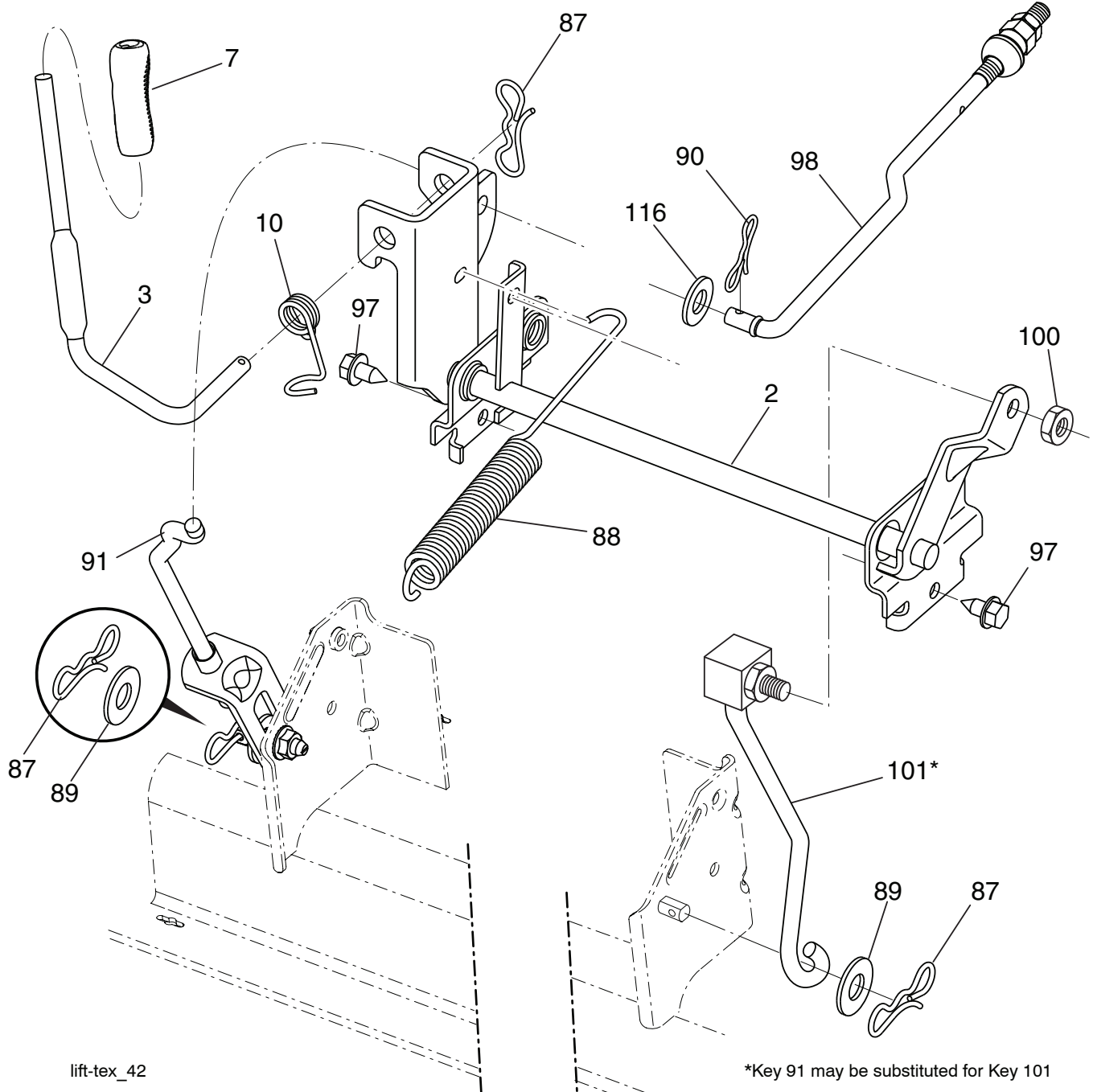
KEY NO.	PART NO.	DESCRIPTION
1	583900906	Mower Housing
2	405507	Cover Mandrel LH
3	405506	Cover Mandrel RH
4	74760512	Bolt Hex Hd 5/16-18 unc
6	195186	Arm Suspension
11	581043901	Blade Revolution
12	584309301	Screw Sems 7/16-20 x 1 Hex Head
13	580854701	Shaft Assembly, Mandrel
14	580796101	Housing, Mandrel
15	585323901	Bearing, Mandrel
19	196539	Bolt, Shoulder
21	73680500	Nut, Crownlock 5/16-18 unc
23	192557	Bracket, Deflector
24	105304X	Cap, Sleeve
25	197026	Spring, Torsion, Deflector
26	110452X	Nut, Push
27	405357	Shield, Deflector
29	131491	Rod, Hinge
32	197473	Pulley, Mandrel
33	400234	Nut, Toplock, Flanged
34	72110612	Bolt Carr Sh. 3/8-16 x 1-1/2 Gr. 5
36	197379	Pulley Idler
40	73900600	Nut, Lock Flg. 3/8-16 unc
41	584953901	Bolt Hex Wsh Hd 313-18 x 1.19
46	137729	Screw 1/4-20 x 5/8
55	197249	Arm, Idler
56	199092	Spacer, Retainer
57	17000616	Screw 3/8-16 x 1
59	141043	Guard, Tuv Idler
68	405143	Belt, Drive
69	72140505	Bolt
116	4898H	Bolt, Shoulder
117	188606	Wheel, Gauge
118	73930600	Nut Centerlock 3/8-16
119	19121414	Washer 3/8 x 7/8 x 14 Ga.
145	193197	Pulley, Idler, Primary
147	197251	Spring Mower Deck
152	199972	Cable Clutch Manual
188	195161	Stud Fastener
189	73900500	Nut Lock Hex Flange

KEY NO.	PART NO.	DESCRIPTION
197	19131312	Washer 13/32 x 13/16 x 12 Ga.
198	403149	Baffle Center Front
199	403150	Baffle Front RH
200	413524	Washer 13/32 x 1 x 1/2 x 11 Ga.
240	74520636	Bolt Fin Hex 3/8-16 x 2-1/4 Gr. 5
241	152927	Screw #10-32.5 3/8 Flange
242	415598	Port Washout
246	580954003	Holder Blade Revltn.
256	578296404	Screw Button Hd 1/4-20
257	73900400	Nut Hex Flg 1/4-20 unc
261	501063502	Plate Reinforcement Front
262	585317805	Plate Reinforcement Sidebolt
263	586638501	Cap Revolution
--	416405	Coupling
--	587126105	Mandrel Assembly (Includes housing (key# 14), shaft assembly (key# 13), bearing (key# 15) and nut (key# 33) only-pulley/washer and blade bolt/washer not included.)
--	582268701	Replacement Mower, Complete

**NOTE:** All component dimensions given in U.S. inches  
1 inch = 25.4 mm

# TRACTOR - - MODEL NUMBER 944.101340

## MOWER LIFT



KEY NO.	PART NO.	DESCRIPTION
2	422027	Shaft Asm., Lift
3	426896	Lever Asm., Lift RH
7	445060X421	Grip, Lever
10	196314	Spring Torsion
87	194209	Pin Cotter 7/16 Bow Tie Lock
88	410710	Spring Lift Assist
89	19191912	Washer Clear Zinc
90	194208	Pin Cotter 5/16 Bow Tie Lock
91	195181	Link Lift Susp Mower Rear

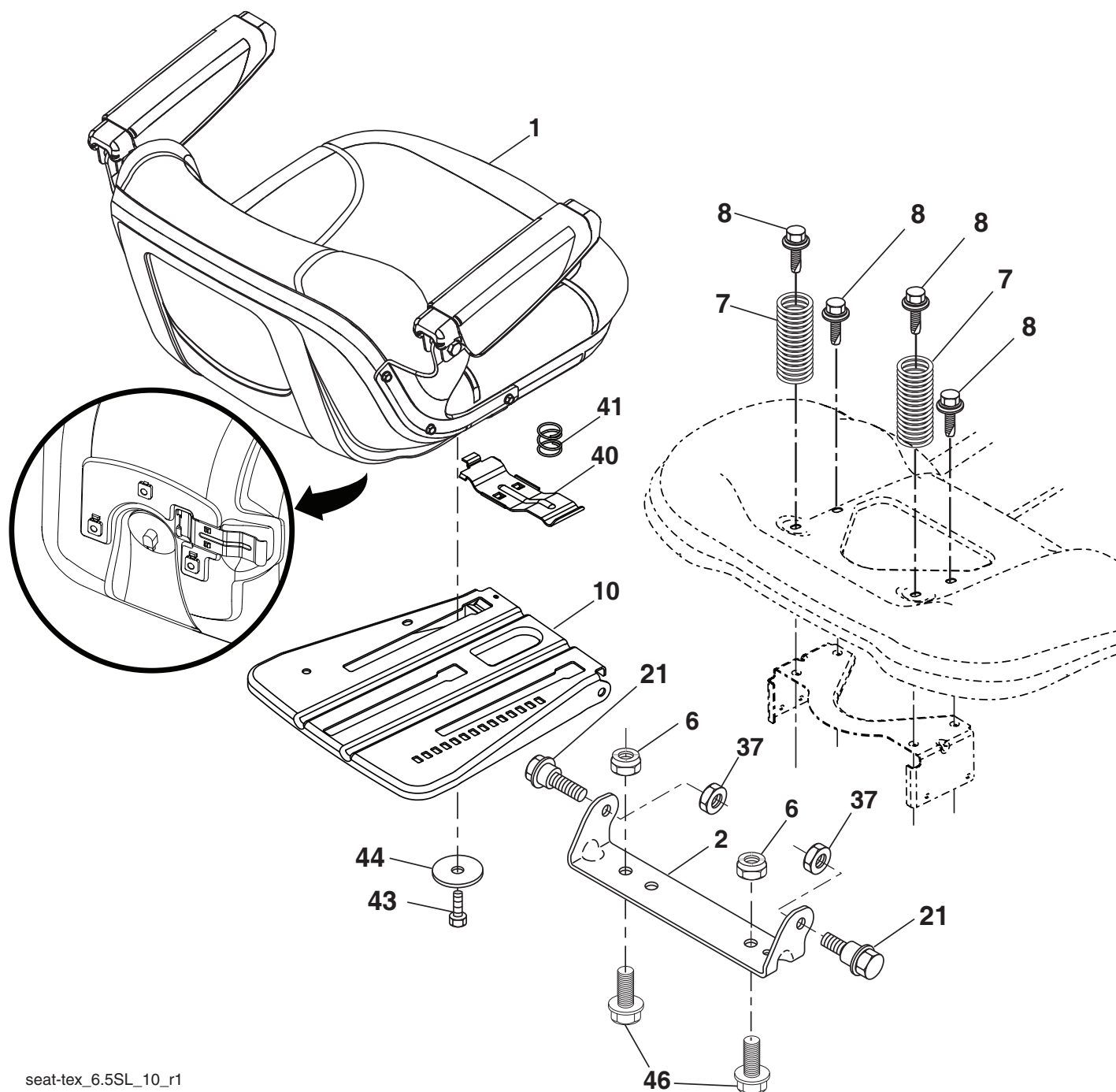
KEY NO.	PART NO.	DESCRIPTION
97	17000612	Screw 3/8-16 x .75
98	195270	Link Lift Susp. Front Mower
100	73930600	Nut Centerlock 3/8-16 unc
101	407003	Link Asm. Lift FXD
116	19151516	Washer 15/32 x 15/16 x 16 Ga.

**NOTE:** All component dimensions given in U.S. inches  
1 inch = 25.4 mm



# TRACTOR - - MODEL NUMBER 944.101340

## SEAT ASSEMBLY



seat-tex\_6.5SL\_10\_r1

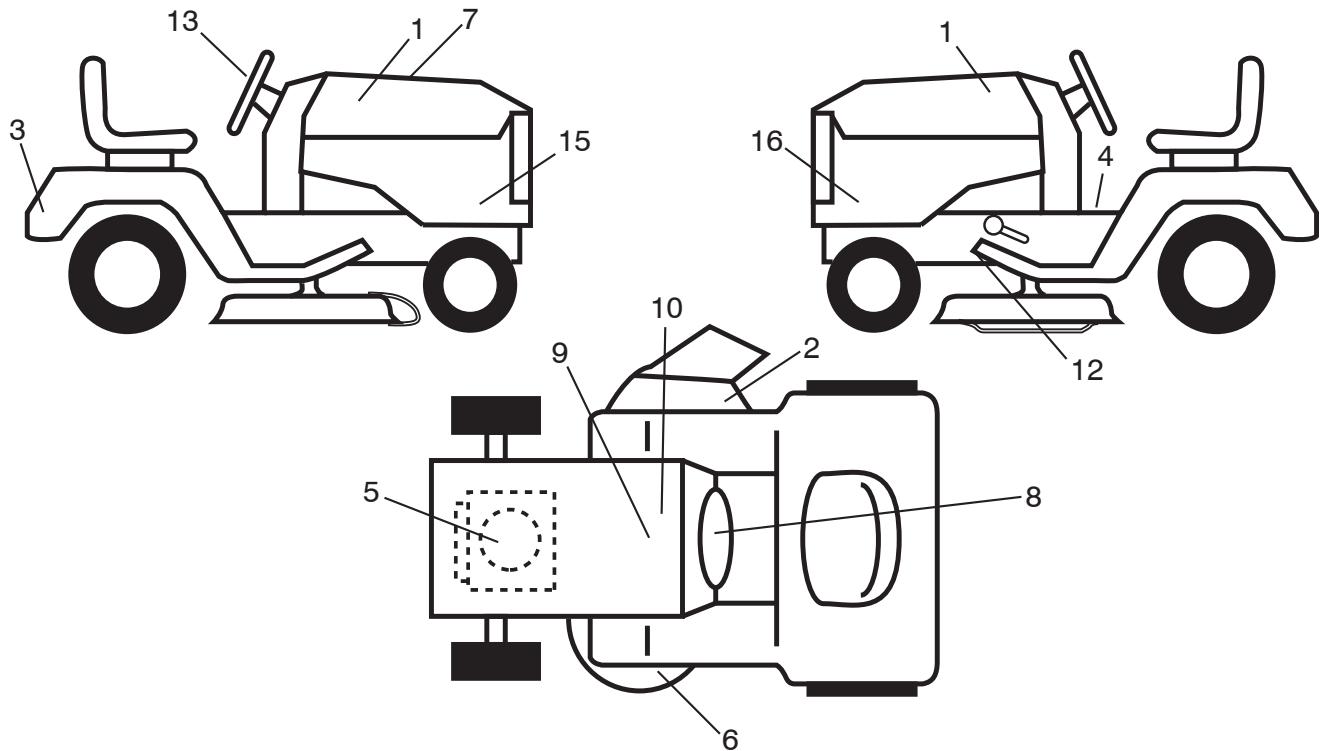
KEY NO.	PART NO.	DESCRIPTION
1	586507701	Seat
2	180166	Bracket Pivot Fender
6	73800600	Nut, Lock W/Ins. 3/8-16 unc
7	587613301	Spring, Seat Cprsn
8	171877	Bolt 5/16-18 unc x 3/4 w/Sems
10	196977	Pan, Seat
21	587907801	Bolt, Shoulder 5/16-18
37	73800500	Nut, Lock 5/16-18 unc

KEY NO.	PART NO.	DESCRIPTION
40	197661	Handle Slide Seat
41	198200	Spring Latch Seat
43	74760612	Bolt 3/8-16 x 3/4
44	19133812	Washer 13/32 x 2-3/8 x 12 Ga.
46	588090401	Bolt 3/8-16 x 1, 1.25

**NOTE:** All component dimensions given in U.S. inches.  
1 inch = 25.4 mm

# TRACTOR - - MODEL NUMBER 944.101340

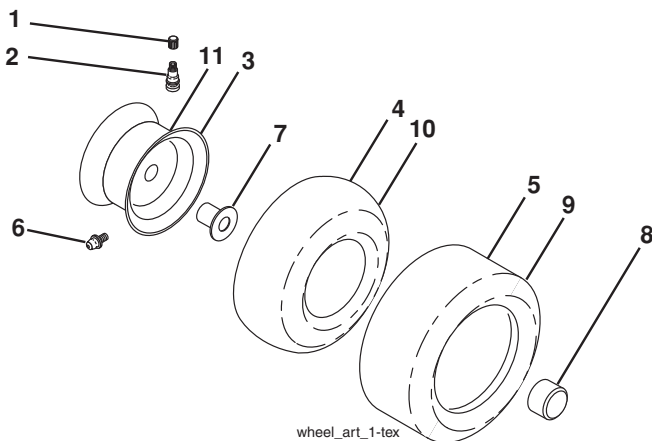
## DECALS



KEY NO.	PART NO.	DESCRIPTION
1	586456301	Decal, Hood
2	584904601	Decal, Deck/Deflect Warning
3	587390301	Decal, Fender
4	581579001	Decal, Warning
5	586620701	Decal, Engine
6	581580001	Decal, V-Belt Schematic
7	582245901	Decal, RPL
8	581579901	Decal, Warning
9	149517	Decal, Battery Warning
10	448709	Decal, Battery

KEY NO.	PART NO.	DESCRIPTION
12	421534	Decal, Mower V-Belt Schematic
13	587389701	Decal, Steering Wheel
15	582267901	Decal, Sideskirt RH
16	582268001	Decal, Sideskirt LH
--	581724801	Decal, Bypass
--	193226X428	Pad, Footrest, LH
--	400981X428	Pad, Footrest, RH
--	115818226	Manual, Operator's (English/French)
--	115818324	Manual, Parts (English/French)

## WHEELS AND TIRES



KEY NO.	PART NO.	DESCRIPTION
1	59192	Cap, Valve, Tire
2	65139	Stem, Valve
3	106732X421	Rim Assembly, Front
4	59904	Tube, Front
5	106222X	Tire, Front 15 x 6-6
6	278H	Fitting, Grease
7	9040H	Bearing, Flange
8	104757X428	Cap, Axle
9	138468	Tire, Rear 20 x 8-8
10	7152J	Tube, Rear
11	106108X421	Rim Assembly, Rear
--	144334	Sealant, Tire (10 oz. Tube)

**NOTE:** All component dimensions given in U.S. inches  
1 inch = 25.4 mm

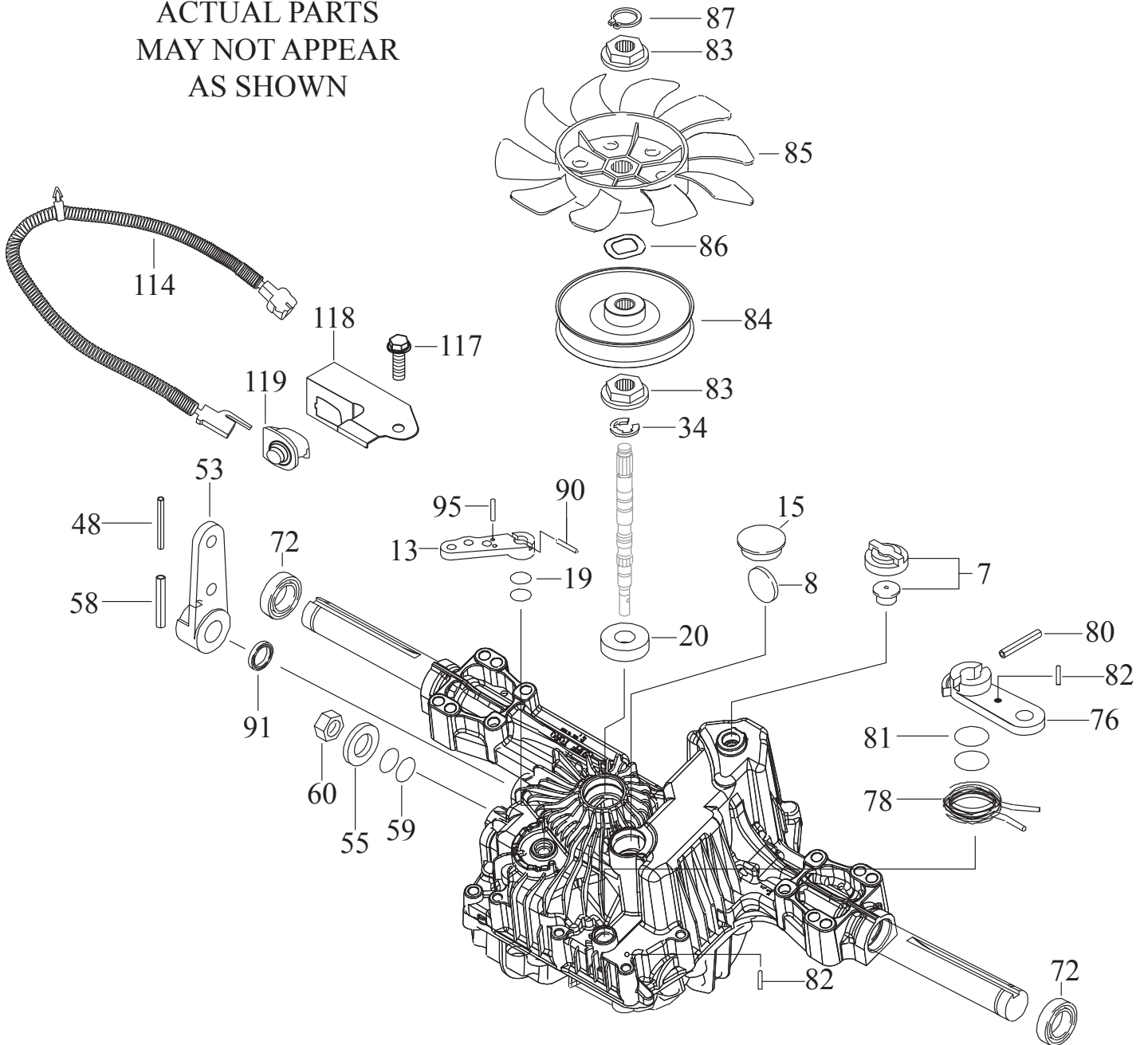
---

## SERVICE NOTES

---

**TRACTOR - - MODEL NUMBER 944.101340**  
**TUFF TORQ TRANSAXLE - MODEL NUMBER K57R**

ACTUAL PARTS  
MAY NOT APPEAR  
AS SHOWN



**TRACTOR - - MODEL NUMBER 944.101340**  
**TUFF TORQ TRANSAXLE - MODEL NUMBER K57R**

<b>KEY NO.</b>	<b>PART NO.</b>	<b>DESCRIPTION</b>
7	414395	VENT VALVE 15
8	414396	MAGNET
13	414398	BYPASS LEVER
15	414399	SEALING CAP 30
19	414401	O-RING 1A P10A
20	414402	SEAL TC 153507
34	414404	E-RING 15
48	414420	ROLL PIN
53	414431	CONTROL LEVER F
55	415924	WASHER 12
58	415925	ROLL PIN 6 * 40
59	415926	O-RING 1A P14
60	415927	NUT 12
72	414407	SEAL 19 * 32 * 8
76	414408	BRAKE LEVER
78	414409	BRAKE RETURN SPRING
80	414410	SPRING PIN 5 * 32
81	414411	O-RING 1A P12
82	414412	SPRING PIN 4 * 16
83	414413	SPINE COLLAR
84	414414	PULLEY L
85	414415	FAN, BLACK
86	414416	WAVE WASHER
87	414417	SNAP RING
90	414418	SPRING PIN 3.0A * 20
91	414419	OIL SEAL 16 * 22 *.03
95	415850	SPRING PIN 3.0A*16
114	404454	PIGTAIL
117	415930	TAPPING SCREW 8 * 20
118	415929	SWITCH BRACKET
119	415928	SWITCH

**NOTE:** All component dimensions given in U.S. inches.  
1 inch = 25.4 mm

# TRACTOR - - MODEL NUMBER 944.101340

## BRIGGS & STRATTON ENGINE - - MODEL NUMBER 44S777, TYPE NUMBER 0013-G1

48 SHORT BLOCK

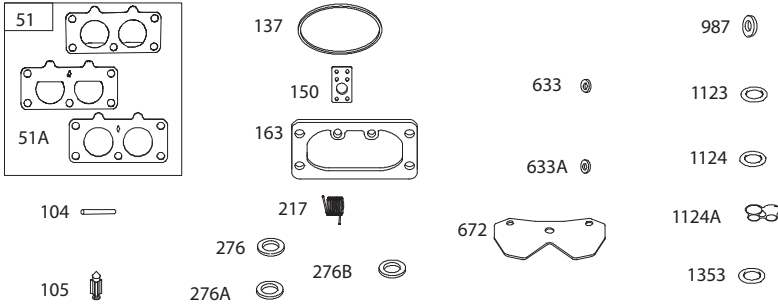
1036 EMISSIONS LABEL

1058 OPERATOR'S MANUAL

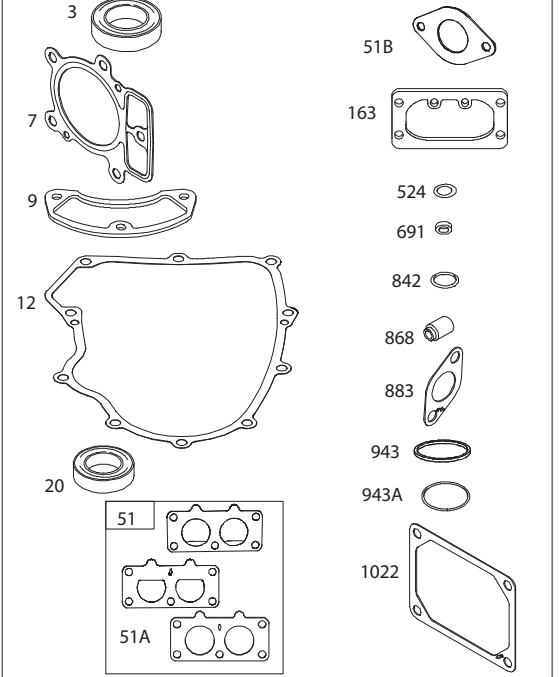
1329 REPLACEMENT ENGINE

1330 REPAIR MANUAL

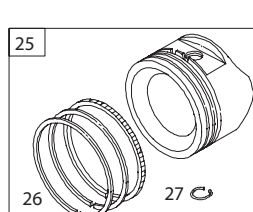
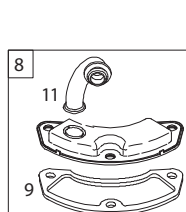
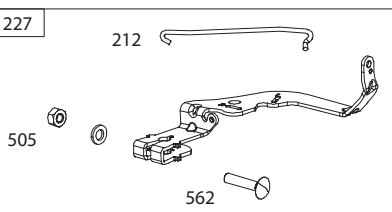
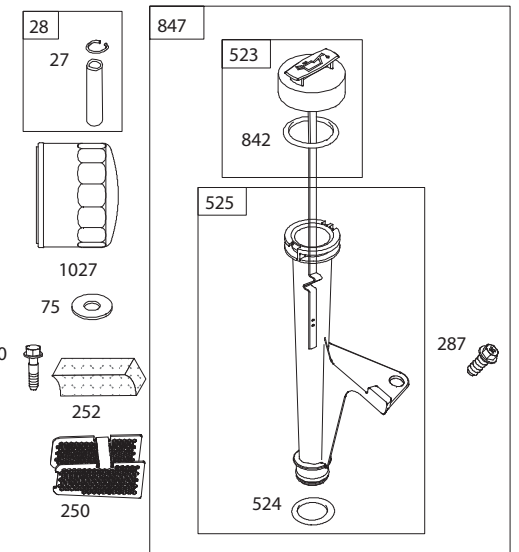
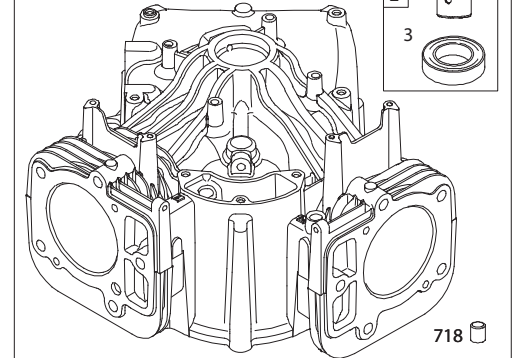
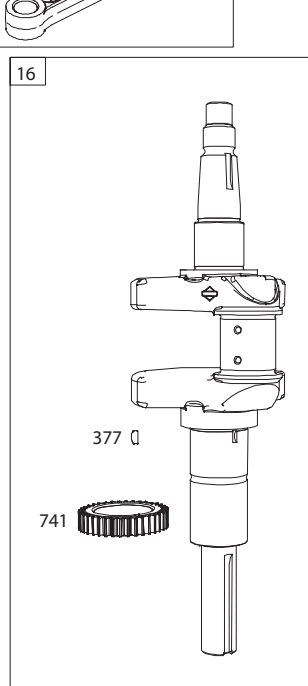
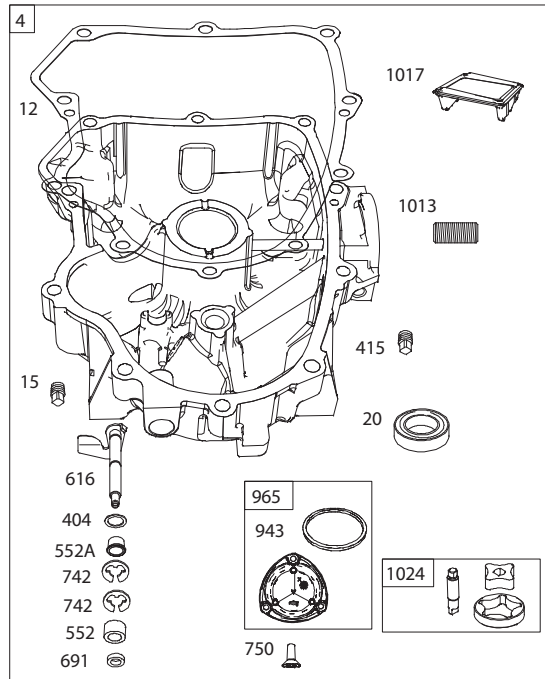
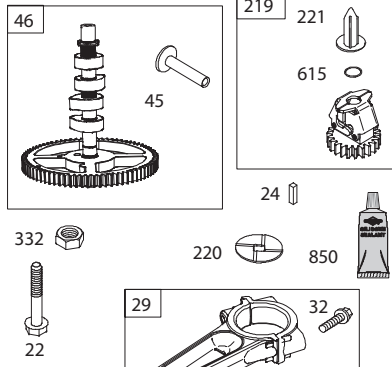
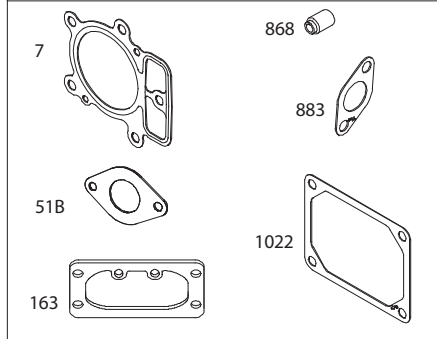
### 121 CARBURETOR OVERHAUL KIT



### 358 ENGINE GASKET SET

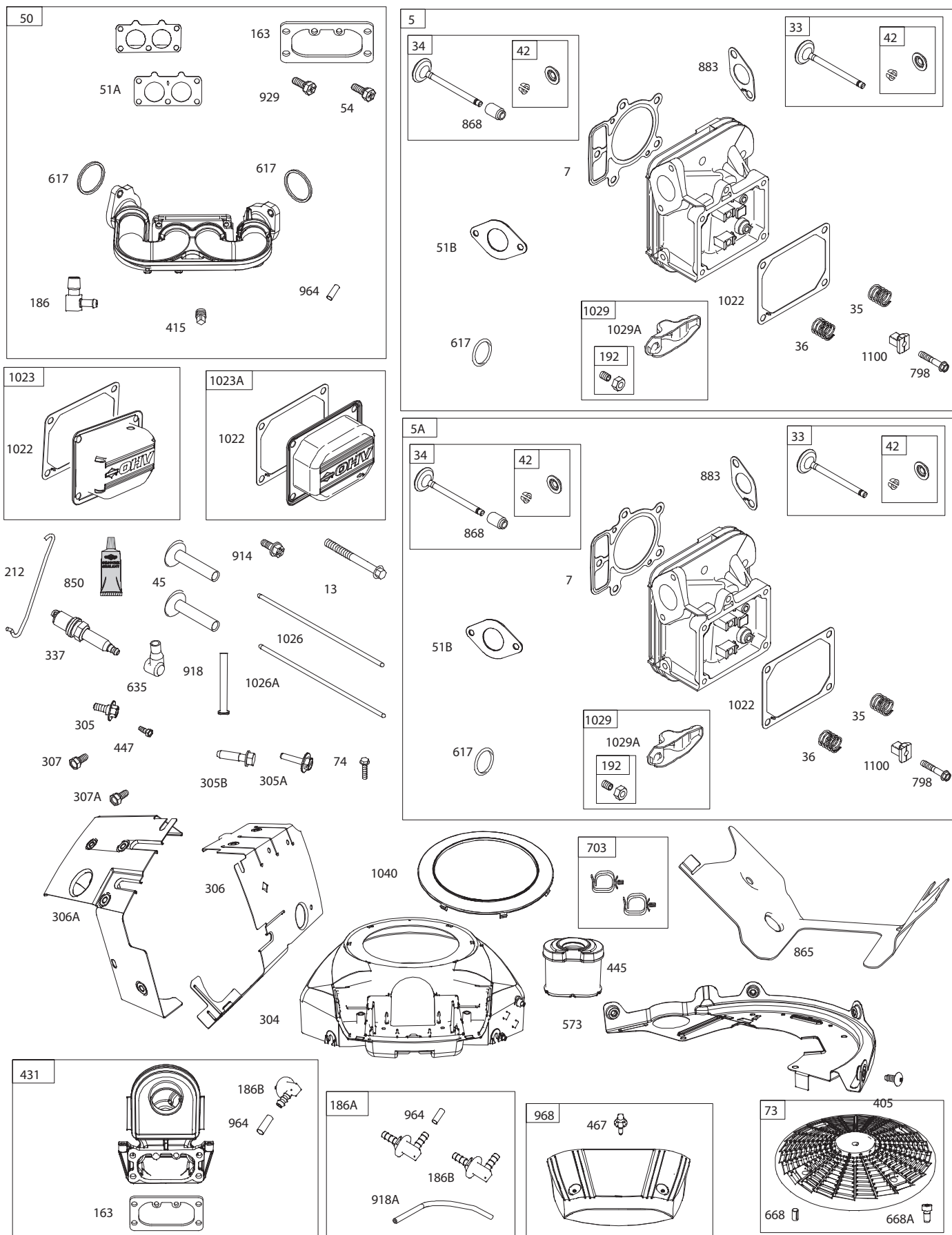


### 1095 VALVE GASKET SET



# TRACTOR - - MODEL NUMBER 944.101340

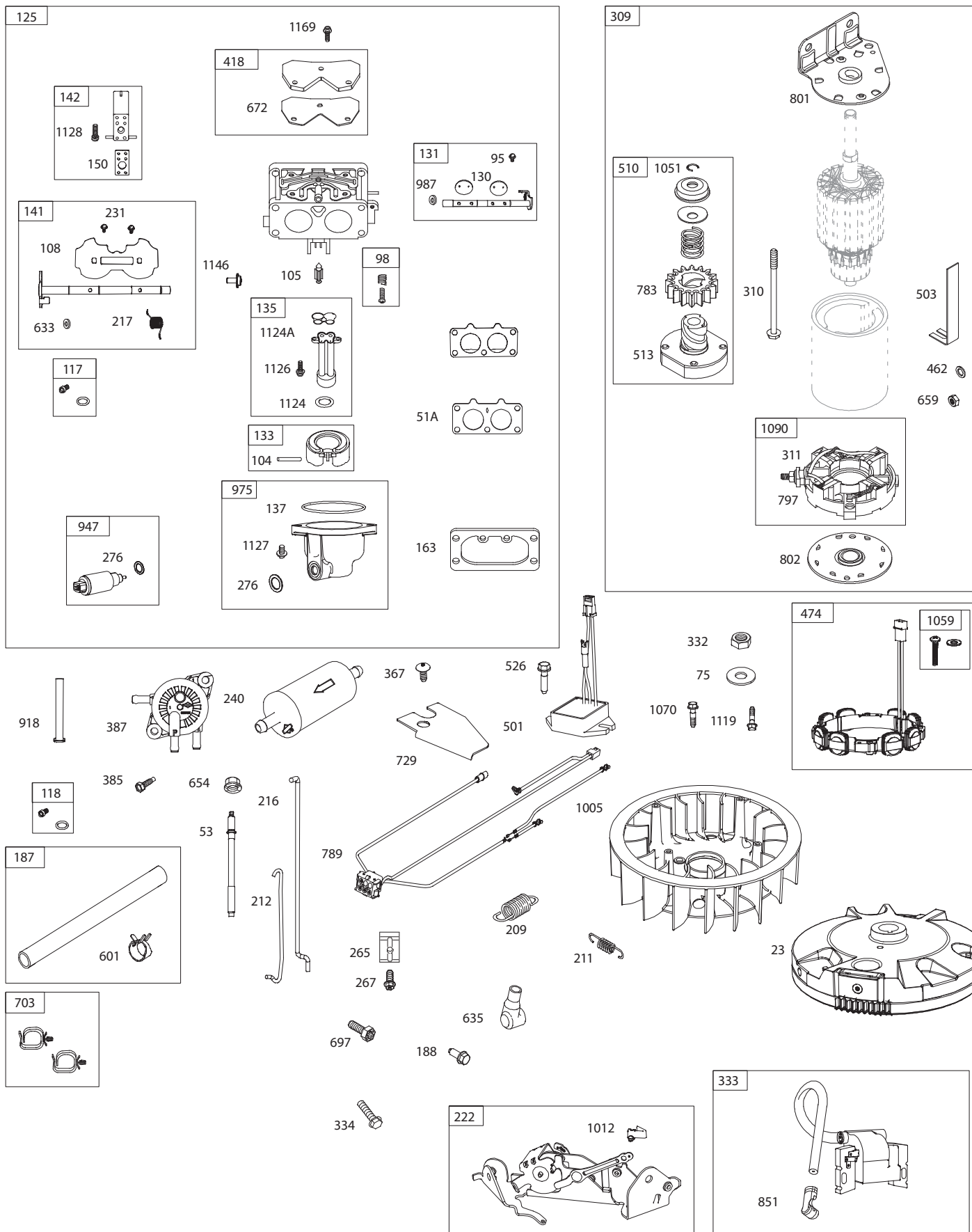
## BRIGGS & STRATTON ENGINE - - MODEL NUMBER 44S777, TYPE NUMBER 0013-G1





# TRACTOR - - MODEL NUMBER 944.101340

## BRIGGS & STRATTON ENGINE - - MODEL NUMBER 44S777, TYPE NUMBER 0013-G1





# TRACTOR - - MODEL NUMBER 944.101340

## BRIGGS & STRATTON ENGINE - - MODEL NUMBER 44S777, TYPE NUMBER 0013-G1

KEY NO.	PART NO.	DESCRIPTION	KEY NO.	PART NO.	DESCRIPTION
1	591695	Cylinder Assembly	163	691001	Gasket-Air Cleaner
2	797673	Bushing/Seal Kit (Magnetoside)	186	795985	Connector-Hose (Intake Manifold)
3	391086s	Seal-Oil (Magnetoside)	186A	799158	Connector-Hose (EVAP)
4	796307	Sump-Engine	186B	845141	Connector-Hose (EVAP)
5	799088	Head-Cylinder (Cylinder #1)	187	791766	Line-Fuel (Cut to Required Length)
5A	799089	Head-Cylinder (Cylinder #2)	188	691108	Screw (Control Bracket)
7	693997	Gasket-Cylinder Head	192	690083	Adjuster-Rocker Arm
8	792185	Breather Assembly	209	798921	Spring-Governor (Orange)
9	690937	Gasket-Breather	211	691019	Spring-Governed Idle (No Color)
10	691108	Screw (Breather Assembly)	212	695238	Link-Throttle
11	792184	Tube-Breather	216	796229	Link-Choke
12	591911	Gasket-Crankcase	217	799771	Spring-Choke Return
13	793988	Screw (Cylinder Head)	219	793338	Gear-Governor
15	690946	Plug-Oil Drain	220	799772	Washer (Governor Gear)
16	796237	Crankshaft	221	841026	Cup-Governor
20	795387	Seal-Oil (PTO Side)	222	592555	Bracket-Control
22	694966	Screw (Crankcase Cover/Sump)	227	798856	Lever-Governor Control
23	691053	Flywheel	231	690718	Screw (Choke Valve)
24	222698s	Key-Flywheel (Aluminum)	240	695666	Filter-Fuel
25	792023	Piston Assembly (Standard)	250	690957	Retainer-Breather
	792072	Piston Assembly (.020" Oversize)	252	794389	Collector-Oil
26	792026	Ring Set (Standard)	265	691024	Clamp-Casing
	792073	Ring Set (.020" Oversize)	267	792629	Screw (Casing Clamp)
27	690975	Lock-Piston Pin	276	695410	Washer-Sealing (Aluminum)
28	696581	Pin-Piston	276A	690997	Washer-Sealing (Fiber)
29	796209	Rod-Connecting	276B	794271	Washer-Sealing
32	690976	Screw (Connecting Rod)	287	697820	Screw (Dipstick Tube)
33	793557	Valve-Exhaust	304	591668	Housing-Blower
34	793556	Valve-Intake	305	691005	Screw (Blower Housing) (1/4-20x.66)
35	694865	Spring-Valve (Intake)	305A	790690	Screw (Blower Housing) (Blower Housing to Intake Elbow)
36	694865	Spring-Valve (Exhaust)	305B	691061	Screw (Blower Housing) (#8-32x.87)
42	499586	Keeper-Valve	306	591666	Shield-Cylinder (Cylinder #2)
45	690977	Tappet-Valve	306A	796852	Shield-Cylinder (Cylinder #1)
46	796853	Camshaft	307	691003	Screw (Cylinder Shield)
48	N/A	Short Block (Not Available At This Printing)	307A	691108	Screw (Cylinder Shield) (1/4-20x.66)
50	591784	Manifold-Intake	309	497595	Motor-Starter
51	795123	Gasket-Intake	310	690323	Screw (Starter Motor)
51A	690950	Gasket-Intake	311	497608	Brush Set
51B	690949	Gasket-Intake	332	691059	Nut (Flywheel)
53	690951	Stud (Carburetor)	333	592846	Armature-Magneto
54	699816	Screw (Intake Manifold)	334	691061	Screw (Magnetos Armature)
73	494439	Screen-Rotating	337	792015	Plug-Spark
74	698425	Screw (Rotating Screen)	358	694012	Gasket Set-Engine
75	691056	Washer (Flywheel)	367	697820	Screw (Wire Clip)
95	690718	Screw (Throttle Valve)	377	690979	Key-Woodruff
98	699721	Kit-Idle Speed	385	797409	Screw (Fuel Pump)
104	694918	Pin-Float Hinge	387	808656	Pump-Fuel
105	797410	Valve-Float Needle	404	690442	Washer (Governor Crank)
108	699723	Valve-Choke	405	697820	Screw (Back Plate)
117	842585	Jet-Main (Standard) (Left and Right Jet)	415	794903	Plug
118	791502	Jet-Main (High Altitude) (Left & Right Jet) (5000/9000 Feet)	418	795912	Plate-Carburetor
121	797890	Kit-Carburetor Overhaul	431	798860	Elbow-Intake
125	796997	Carburetor	445	593240	Filter-Air Cleaner Cartridge
130	690993	Valve-Throttle	447	691003	Screw (Air Guide Cover) (#10-24x.43)
131	499805	Kit-Throttle Shaft	462	691261	Washer (Starter Cable)
133	699724	Float-Carburetor	467	790697	Knob-Air Cleaner
135	699729	Tube-Fuel Transfer	474	592830	Alternator
137	690994	Gasket-Float Bowl	501	845907	Regulator
141	796228	Kit-Choke Shaft			
142	796871	Nozzle-Carburetor			
150	841649	Gasket-Nozzle			

# TRACTOR - - MODEL NUMBER 944.101340

## BRIGGS & STRATTON ENGINE - - MODEL NUMBER 44S777, TYPE NUMBER 0013-G1

KEY NO.	PART NO.	DESCRIPTION	KEY NO.	PART NO.	DESCRIPTION
503	691532	Strap-Starter	1013	690954	Nipple-Oil Filter
505	691029	Nut (Governor Control Lever)	1017	796214	Screen-Oil Pump
510	696541	Drive-Starter	1022	690971	Gasket-Rocker Cover
513	692024	Clutch-Drive	1023	793146	Cover-Rocker (Cylinder #1)
523	691036	Dipstick	1023A	499600	Cover-Rocker (Cylinder #2)
524	691032	Seal-Dipstick Tube	1024	796220	Pump-Oil
525	691037	Tube-Dipstick	1026	690981	Rod-Push (Exhaust) (Steel)
526	691108	Screw (Regulator)	1026A	690982	Rod-Push (Intake) (Aluminum)
552	796638	Bushing-Governor Crank	1027	795890	Filter-Oil
552A	690553	Bushing-Governor Crank	1029	690972	Arm-Rocker
562	690311	Screw (Governor Control Lever)	1029A	807323	Arm-Rocker
573	790444	Plate-Back	1036		Label-Emissions (Available from a Briggs & Stratton Authorized Dealer)
601	691038	Hose-Clamp (Black)	1040	791237	Plate-Trim
615	698290	Retainer-Governor Shaft	1051	691265	Ring-Retaining
616	691045	Crank-Governor	1058	381258TRI	Operator's Manual
617	697891	Seal-O Ring (Intake Manifold) (Red)	1059	698516	Kit-Screw/Washer (Alternator)
633	699813	Seal-Choke/Throttle Shaft (Choke Shaft)	1070	592604	Screw (Flywheel Fan)
633A	690998	Seal-Choke/Throttle Shaft	1090	691293	Retainer-Brush
635	66538s	Boot-Spark Plug	1095	694013	Gasket Set-Valve
654	690958	Nut (Carburetor) (Serrated)	1100	791959	Pivot-Rocker Arm
668	691500	Spacer (Rotating Screen)	1119	691183	Screw (Alternator)
668A	691215	Spacer (Rotating Screen)	1123	690987	Seal-O Ring (Solenoid Retainer)
672	690234	Gasket-Carburetor Plate	1124	841653	Seal-O Ring (Fuel Transfer Tube)
691	790574	Seal-Governor Shaft	1124A	690988	Seal-O Ring (Fuel Transfer Tube)
697	591909	Screw (Drive Cap)	1126	690991	Screw (Fuel Transfer Tube)
703	691010	Clip (Fuel Line)	1127	695407	Screw (Float Bowl)
718	690959	Pin-Locating	1128	690990	Screw (Carburetor Nozzle)
729	797454	Clip-Wire	1146	690991	Screw (Choke Shaft)
741	690980	Gear-Timing	1169	690990	Screw (Carburetor Cover Plate)
742	690328	Retainer-E Ring	1329	N/A	Replacement Engine (Not Available At This Printing)
750	796208	Screw (Oil Pump Cover)	1330	N/A	Repair Manual (Not Available At This Printing)
783	695708	Gear-Pinion	1353	699725	Seal-O Ring (Fuel Transfer Tube Extension)
789	591392	Harness-Wiring			
797	693167	Nut (Brush Retainer)			
798	697890	Screw (Rocker Arm)			
801	691283	Cap-Drive			
802	691286	Cap-End			
842	691031	Seal-O Ring (Dipstick Tube)			
847	499602	Dipstick/Tube Assembly			
850	100106	Sealant-Liquid			
851	493880s	Terminal-SparkPlug			
865	591667	Cover-Air Guide (Valley)			
868	690968	Seal-Valve			
883	690970	Gasket-Exhaust			
914	691127	Screw (Rocker Cover)			
918	797408	Hose-Vacuum (Rocker Cover #1)			
918A	799160	Hose-Vacuum (EVAP)			
929	695239	Screw (Choke Control Bracket)			
943	796222	Seal-O Ring (Oil Pump Cover) (Square Cut) (I.D. 2.48)			
943A	690589	Seal-O Ring (Oil Pump Cover)			
947	798779	Solenoid-Fuel			
964	799159	Cap-Connector			
965	796221	Cover-Oil Pump			
968	795120	Cover-Air Cleaner			
975	796777	Bowl-Fuel			
987	691000	Seal-Throttle Shaft			
1005	791236	Fan-Flywheel			
1012	592556	Retainer-Link			

Carburetor Overhaul Kit      Key No. 121  
Engine Gasket Set              Key No. 358  
Valve Gasket Set                Key No. 1095

**NOTE:** All component dimensions given in U.S. inches.  
1 inch = 25.4 mm

**GENERAL:** Craftsman products are warranted to be free from defects in materials or workmanship for a specific time period as set-out below (the "Warranty Period"). Warranties extend to the original purchaser of a Craftsman product only. Purchases made through an online auction or through any website other than www.sears.ca are excluded. The relevant Warranty Period commences on the original date of purchase. Within this period, SEARS CANADA, Inc. will, at its sole option, repair or replace any products or components which fail in normal use. Such repairs or replacement will be made at no charge to the customer for parts or labor, provided that the customer shall be responsible for any transportation cost.

**EXCLUSIONS:** This warranty does not cover failures due to normal wear, abuse, misuse, neglect (including but not limited to the use of stale fuel, dirt, abrasives, moisture, rust, corrosion, or any adverse reaction due to improper storage or use habits), improper maintenance or failure to follow maintenance guidelines and/or instructions, failure to operate the product in accordance with the owner's manual or any additional instructions or information provided at the time of purchase or in subsequent communications with the original purchaser, accident or unauthorized alterations or repairs made or attempted by others. Also excluded from warranty coverage - except as provided below - are the following: maintenance, adjustments, components subject to wear including but not limited to: cosmetic components, belts, blades, blade adapters, bulbs, tires, filters, guide bars, lubricants, seats, grips, recoil assy's, saw chains and bars, trimmer lines and spools, spark plugs, starter ropers and tines, and discoloration resulting from ultraviolet light. Any product missing the model and/or serial number identification label will be disqualified from coverage under this warranty.

**REPAIRS:** Repairs have a 90 day warranty. If the defective product is still within the Warranty Period, then the new warranty is 90 days from the date of repair or to the end of the original Warranty Period, whichever period is longer.

**DISCLAIMERS:** THE WARRANTIES AND REMEDIES CONTAINED HEREIN ARE EXCLUSIVE AND IN LIEU OF ALL OTHER WARRANTIES, WHETHER ORAL OR WRITTEN (OTHER THAN AS STATED HEREIN), AND WHETHER EXPRESS, IMPLIED OR STATUTORY, INCLUDING BUT NOT LIMITED TO ANY. THIS WARRANTY GIVES YOU SPECIFIC LEGAL RIGHTS, WHICH MAY VARY FROM PROVINCE TO PROVINCE.

IN NO EVENT SHALL SEARS BE LIABLE FOR ANY INCIDENTAL, SPECIAL, INDIRECT OR CONSEQUENTIAL DAMAGES, WHETHER RESULTING FROM THE USE, MISUSE OR INABILITY TO USE THE PRODUCT OR FROM DEFECTS IN THE PRODUCT. THE EXCLUSIONS IN THIS PARAGRAPH SHALL NOT APPLY IN JURISDICTIONS WHERE APPLICABLE LAW DOES NOT ALLOW FOR THE EXCLUSION OF INCIDENTAL OR CONSEQUENTIAL DAMAGES. IN SUCH JURISDICTIONS, THIS PARAGRAPH SHALL NOT APPLY, BUT THE REMAINING PROVISIONS OF THIS DOCUMENT SHALL REMAIN VALID.

SEARS retains the exclusive right to repair or replace the product or offer a full refund of the purchase price at its sole discretion. SUCH REMEDY SHALL BE YOUR SOLE AND EXCLUSIVE REMEDY FOR ANY BREACH OF WARRANTY.

**CUSTOMER RESPONSIBILITIES:** In addition to complying with all suggested maintenance guidelines and instructions, customers' obligations shall include but shall not be limited to: operating the product in accordance with the owner's manual or any additional instructions or information provided at the time of purchase or in subsequent communications to the purchaser from time to time, exhibit reasonable care in the use, operation, maintenance, general upkeep and storage of the product. Failure to comply with these requirements will void any applicable warranty.

**LIST OF APPLICABLE WARRANTY PERIODS:** The following list contains the applicable Warranty Period for your Craftsman product and is based on a combination of the type of product or component and the intended and actual use of the product or component:

1. **90 DAYS:** Craftsman products intended for use or actually used for commercial, institutional, professional or income-producing purposes
2. **2 YEARS:** Craftsman riding lawn mowers, yard and garden tractors, walk behind mowers, tillers, brush cutters, snow blowers, handheld blowers, backpack blowers, hedge trimmers and electrical products for noncommercial, nonprofessional, non-institutional, or non-income-producing use, except for those components which are part of engine systems manufactured by third party engine manufacturers for which the purchase has received an separate warranty with product information supplied at the time of purchase.
3. **1 YEAR:** Craftsman power cutters, stump grinders, pole pruners, gas chain saws, electric chain saws, trimmer attachments, baggers and pole saws for noncommercial, nonprofessional, non-institutional, or non-income-producing use.
4. **90 DAYS:** All defective batteries, which will be replaced during this 90-day Warranty Period.
5. **60 DAYS:** Additional Warranty Period of 60 days will apply to adjustments and worn products or components BUT DOES NOT INCLUDE WEAR OR ADJUSTMENTS for products used for commercial, institutional, professional or income-producing purposes. Wear items include but are not limited to: belts, blades, tires, spark plugs, air filters, chains, shear bolts, skid plates, scraper bars, drift cutters, ropes, tines, collection bags and pulleys.

As the Warranty Period runs from the date of purchase and NOT from the date that a product is delivered, opened, assembled or first used, please ensure during this time period that your product or component has been assembled and tested for correction operation regardless of when you intend to actually use it. Claims made after the Warranty Period has expired will not be honored.

**PROOF OF PURCHASE/DOCUMENTATION:** Warranty coverage is conditioned upon the original purchaser furnishing SEARS CANADA or its authorized third party service provider if applicable, with the original sales receipt or other adequate written proof of the original purchase date and identification of the product. In the event that the original purchaser is unable to provide a company of the original sales receipt, SEARS CANADA Inc. reserves the right to determine in its sole discretion what other written proof of the original purchase date and identification of the product is acceptable.

# Get it fixed, at your home or ours!

Just Call:

**1-800-4-MY-HOME<sup>®</sup>**

(1-800-469-4663)

24 hours a day, 7 days a week

For the repair of major brand appliances **in your own home...**  
no matter who made it, no matter who sold it!

For your nearest **Sears Parts and Service** location,  
to bring in products like vacuums, lawn equipment and electronics.

For **Sears Parts & Service**, to order the replacement parts,  
accessories and owner's manuals that you need to do-it-yourself.

[www.sears.ca](http://www.sears.ca)

---

To purchase or inquire about a Sears Maintenance Agreement, call:

**1-800-361-6665**

9 a.m. – 11 p.m. Mon. – Fri., EST, 9 a.m. – 4 p.m. Sat.

---

Pour service en français:

**1-800-LE-FOYER<sup>MC</sup>**

(1-800-533-6937)

[www.sears.ca](http://www.sears.ca)



® / <sup>TM</sup> Trademarks of Sears Brands Management Corporation used under license by Sears Canada

<sup>MD</sup> Marque déposée / <sup>MC</sup> Marque de commerce de Sears Brands Management Corporation utilisée en vertu d'une licence de Sears Canada